

**Klamath River Basin Fall Chinook Salmon Spawner Escapement, In-river Harvest and Run-size Estimates
1978-2011 a/**

Page 1 of 15

SPAWNER ESCAPEMENT									
	1978			1979			1980		
	Grilse	Adults	Totals	Grilse	Adults	Totals	Grilse	Adults	Totals
Hatchery Spawners									
Iron Gate Hatchery (IGH)	925	6,945	7,870	257	2,301	2,558	451	2,412	2,863
Trinity River Hatchery (TRH)	1,325	6,034	7,359	964	1,335	2,299	2,256	4,099	6,355
Subtotals	2,250	12,979	15,229	1,221	3,636	4,857	2,707	6,511	9,218
Natural Spawners									
Trinity River basin									
(above Willow Creek, excluding TRH)	4,712	31,052	35,764	3,936	8,028	11,964	16,837	7,700	24,537
Salmon River basin	1,400	2,600	4,000	150	1,000	1,150	200	800	1,000
Scott River basin	1,909	3,423	5,332	428	3,396	3,824	2,245	2,032	4,277
Shasta River basin	6,707	12,024	18,731	1,040	7,111	8,151	4,334	3,762	8,096
Bogus Creek basin	651	4,928	5,579	494	5,444	5,938	1,749	3,321	5,070
Main Stem Klamath River									
(excluding IGH)	300	1,700	2,000	466	4,190	4,656	867	2,468	3,335
Misc. Klamath tributaries									
(above Hoopa and Yurok Reservations)	735	2,765	3,500	147	1,068	1,215	500	1,000	1,500
Hoopa and Yurok Reservation tribs.	-- b/	-- b/	-- b/	100 c/	400 c/	500 c/	250 c/	400 c/	650 c/
Subtotals	16,414	58,492	74,906	6,761	30,637	37,398	26,982	21,483	48,465
Total Spawner Escapement	18,664	71,471	90,135	7,982	34,273	42,255	29,689	27,994	57,683
IN-RIVER HARVEST									
	1978			1979			1980		
	Grilse	Adults	Totals	Grilse	Adults	Totals	Grilse	Adults	Totals
Angler Harvest									
Klamath River (below Hwy 101 bridge)	122	854	976	216	484	700	835	727	1,562
Trinity River basin (above Willow Creek)	-- d/	-- d/	-- d/	765	1,157	1,922	2,456	998	3,454
Balance of Klamath system	1,960	840	2,800	1,200	500	1,700	2,600	2,771	5,371
Subtotals	2,082	1,694	3,776	2,181	2,141	4,322	5,891	4,496	10,387
Indian Net Harvest e/									
Klamath River (below Hwy 101 bridge)	--	--	--	--	--	--	495	9,605	10,100
Klamath River (Hwy 101 to Trinity mouth)	--	--	--	--	--	--	272	1,528	1,800
Trinity River (Hoopa Reservation)	--	--	--	--	--	--	220	880	1,100
Subtotals	1,800	18,200	20,000	1,350	13,650	15,000	987	12,013	13,000
Total In-river Harvest	3,882	19,894	23,776	3,531	15,791	19,322	6,878	16,509	23,387
IN-RIVER RUN									
	1978			1979			1980		
	Grilse	Adults	Totals	Grilse	Adults	Totals	Grilse	Adults	Totals
Totals									
In-river Harvest and Escapement	22,546	91,365	113,911	11,513	50,064	61,577	36,567	44,503	81,070
Angling Mortality (2.04% of harvest) f/	42	35	77	45	44	88	120	92	212
Net Mortality (8.70% of harvest) f/	157	1,583	1,739	117	1,187	1,304	86	1,045	1,130
Total In-river Run	22,745	92,983	115,728	11,675	51,295	62,970	36,773	45,640	82,413

(continued next page)

**Klamath River Basin Fall Chinook Salmon Spawner Escapement, In-river Harvest and Run-size Estimates
1978-2011 a/**

Page 2 of 15

SPAWNER ESCAPEMENT									
	1981			1982			1983		
	Grilse	Adults	Totals	Grilse	Adults	Totals	Grilse	Adults	Totals
Hatchery Spawners									
Iron Gate Hatchery (IGH)	540	2,055	2,595	1,833	8,353	10,186	514	8,371	8,885
Trinity River Hatchery (TRH)	1,004	2,370	3,374	4,235	2,058	6,293	271	5,494	5,765
Subtotals	1,544	4,425	5,969	6,068	10,411	16,479	785	13,865	14,650
Natural Spawners									
Trinity River basin									
(above Willow Creek, excluding TRH)	5,906	15,340	21,246	8,149	9,274	17,423	853	17,284	18,137
Salmon River basin	450	750	1,200	300	1,000	1,300	75	1,200	1,275
Scott River basin	3,409	3,147	6,556	4,350	5,826	10,176	170	3,398	3,568
Shasta River basin	4,330	7,890	12,220	1,922	6,533	8,455	753	3,119	3,872
Bogus Creek basin	912	2,730	3,642	2,325	4,818	7,143	335	2,713	3,048
Main Stem Klamath River									
(excluding IGH)	1,000	3,000	4,000	1,000	3,000	4,000	200	1,800	2,000
Misc. Klamath tributaries									
(above Hoopa and Yurok Reservations)	500	1,000	1,500	600	1,500	2,100	140	1,270	1,410
<u>Hoopa and Yurok Reservation tribs.</u>	-- b/	-- b/	-- b/	-- b/	-- b/	-- b/	-- b/	-- b/	-- b/
Subtotals	16,507	33,857	50,364	18,646	31,951	50,597	2,526	30,784	33,310
Total Spawner Escapement	18,051	38,282	56,333	24,714	42,362	67,076	3,311	44,649	47,960
IN-RIVER HARVEST									
	1981			1982			1983		
	Grilse	Adults	Totals	Grilse	Adults	Totals	Grilse	Adults	Totals
Angler Harvest									
Klamath River (below Hwy 101 bridge)	536	1,714	2,250	1,252	3,539	4,791	60	750	810
Trinity River basin (above Willow Creek)	1,456	3,174	4,630	2,554	2,321	4,875	116	2,360	2,476
Balance of Klamath system	5,260	1,095	6,355	8,678	2,479	11,157	175	1,125	1,300
Subtotals	7,252	5,983	13,235	12,484	8,339	20,823	351	4,235	4,586
Indian Net Harvest e/									
Klamath River (below Hwy 101 bridge)	912	23,097	24,009	290	4,547	4,837	12	800	812
Klamath River (Hwy 101 to Trinity mouth)	1,104	8,405	9,509	1,195	8,424	9,619	121	5,700	5,821
Trinity River (Hoopa Reservation)	449	1,531	1,980	314	1,511	1,825	30	1,390	1,420
Subtotals	2,465	33,033	35,498	1,799	14,482	16,281	163	7,890	8,053
Total In-river Harvest	9,717	39,016	48,733	14,283	22,821	37,104	514	12,125	12,639
IN-RIVER RUN									
	1981			1982			1983		
	Grilse	Adults	Totals	Grilse	Adults	Totals	Grilse	Adults	Totals
Totals									
In-river Harvest and Escapement	27,768	77,298	105,066	38,997	65,183	104,180	3,825	56,774	60,599
Angling Mortality (2.04% of harvest) f/	148	122	270	255	170	425	7	86	94
Net Mortality (8.70% of harvest) f/	214	2,872	3,087	156	1,259	1,416	14	686	700
Total In-river Run	28,130	80,292	108,422	39,408	66,612	106,020	3,846	57,546	61,392

(continued next page)

**Klamath River Basin Fall Chinook Salmon Spawner Escapement, In-river Harvest and Run-size Estimates
1978-2011 a/**

Page 3 of 15

SPAWNER ESCAPEMENT

	1984			1985			1986		
<u>Hatchery Spawners</u>	Grilse	Adults	Totals	Grilse	Adults	Totals	Grilse	Adults	Totals
Iron Gate Hatchery (IGH)	764	5,330	6,094	2,159	19,951	22,110	1,461	17,096	18,557
Trinity River Hatchery (TRH)	766	2,166	2,932	18,166	2,583	20,749	3,609	15,795	19,404
Subtotals	1,530	7,496	9,026	20,325	22,534	42,859	5,070	32,891	37,961
<u>Natural Spawners</u>									
Trinity River basin									
(above Willow Creek, excluding TRH)	3,416	5,654	9,070	29,454	9,217	38,671	20,459	92,548	113,007
Salmon River basin	216 <i>g/</i>	1,226 <i>g/</i>	1,442 <i>g/</i>	905	2,259	3,164	949	2,716	3,665
Scott River basin	358	1,443	1,801	1,357	3,051	4,408	4,865	3,176	8,041
Shasta River basin	480	2,362	2,842	2,227	2,897	5,124	683	3,274	3,957
Bogus Creek basin	465	3,039	3,504	1,156	3,491	4,647	1,184	6,124	7,308
Main Stem Klamath River									
(excluding IGH)	200	1,350	1,550	156	468	624	196	603	799
Misc. Klamath tributaries									
(above Hoopa and Yurok Reservations)	150	990	1,140	646	4,214	4,860	606	4,919	5,525
Hoopa and Yurok Reservation tribs.	-- <i>b/</i>	-- <i>b/</i>	-- <i>b/</i>	50 <i>h/</i>	80 <i>h/</i>	130 <i>h/</i>	-- <i>b/</i>	-- <i>b/</i>	-- <i>b/</i>
Subtotals	5,285	16,064	21,349	35,951	25,677	61,628	28,942	113,360	142,302
Total Spawner Escapement	6,815	23,560	30,375	56,276	48,211	104,487	34,012	146,251	180,263

IN-RIVER HARVEST

	1984			1985			1986		
<u>Angler Harvest</u>	Grilse	Adults	Totals	Grilse	Adults	Totals	Grilse	Adults	Totals
Klamath River (below Hwy 101 bridge)	175	548	723	1,479	2,427 <i>i/</i>	3,906	704	2,456	3,160
Trinity River basin (above Willow Creek)	393	736	1,129	5,442	154 <i>i/</i>	5,596	3,438	12,039	15,477
Balance of Klamath system	384	2,056	2,440	4,274	1,001 <i>i/</i>	5,275	5,266	6,532	11,798
Subtotals	952	3,340	4,292	11,195	3,582 <i>i/</i>	14,777	9,408	21,027	30,435
<u>Indian Net Harvest e/</u>									
Klamath River (below Hwy 101 bridge)	132	11,878	12,010	132	5,700	5,832	191	15,286	15,477
Klamath River (Hwy 101 to Trinity mouth)	183	5,622	5,805	476	3,925	4,401	377	5,033	5,410
Trinity River (Hoopa Reservation)	140	1,170	1,310	947 <i>j/</i>	1,941 <i>j/</i>	2,888 <i>j/</i>	286	4,808	5,094
Subtotals	455	18,670	19,125	1,555	11,566	13,121	854	25,127	25,981
Total In-river Harvest	1,407	22,010	23,417	12,750	15,148	27,898	10,262	46,154	56,416

IN-RIVER RUN

	1984			1985			1986		
<u>Totals</u>	Grilse	Adults	Totals	Grilse	Adults	Totals	Grilse	Adults	Totals
In-river Harvest and Escapement	8,222	45,570	53,792	69,026	63,359	132,385	44,274	192,405	236,679
Angling Mortality (2.04% of harvest) <i>f/</i>	19	68	88	228	73	302	192	429	621
Net Mortality (8.70% of harvest) <i>f/</i>	40	1,623	1,663	135	1,006	1,141	74	2,185	2,259
Total In-river Run	8,281	47,261	55,542	69,389	64,438	133,827	44,540	195,019	239,559

(continued next page)

**Klamath River Basin Fall Chinook Salmon Spawner Escapement, In-river Harvest and Run-size Estimates
1978-2011 a/**

Page 4 of 15

SPAWNER ESCAPEMENT

	1987			1988			1989		
<u>Hatchery Spawners</u>	Grilse	Adults	Totals	Grilse	Adults	Totals	Grilse	Adults	Totals
Iron Gate Hatchery (IGH)	1,825	15,189	17,014	609	16,106	16,715	831	10,859	11,690
Trinity River Hatchery (TRH)	2,453	13,934	16,387	4,752	17,352	22,104	239	11,132	11,371
Subtotals	4,278	29,123	33,401	5,361	33,458	38,819	1,070	21,991	23,061
<u>Natural Spawners</u>									
Trinity River basin									
(above Willow Creek, excluding TRH)	5,949	71,920	77,869	10,626	44,616	55,242	2,543	29,445	31,988
Salmon River basin	118	3,832	3,950	327	3,273	3,600	695	2,915	3,610
Scott River basin	797	7,769	8,566	473	4,727	5,200	1,188	3,000	4,188
Shasta River basin	398	4,299	4,697	256	2,586	2,842	137	1,440	1,577
Bogus Creek basin	1,208	9,748	10,956	225	16,215	16,440	444	2,218	2,662
Main Stem Klamath River									
(excluding IGH)	65	863	928	164	2,982	3,146	214	1,011	1,225
Misc. Klamath tributaries									
(above Hoopa and Yurok Reservations)	237	3,286	3,523	418	4,167	4,585	248	3,239	3,487
Hoopa and Yurok Reservation tribs.	-- b/	-- b/	-- b/	55 k/	820 k/	875 k/	40 k/	600 k/	640 k/
Subtotals	8,772	101,717	110,489	12,544	79,386	91,930	5,509	43,868	49,377
Total Spawner Escapement	13,050	130,840	143,890	17,905	112,844	130,749	6,579	65,859	72,438

IN-RIVER HARVEST

	1987			1988			1989		
<u>Angler Harvest</u>	Grilse	Adults	Totals	Grilse	Adults	Totals	Grilse	Adults	Totals
Klamath River (below Hwy 101 bridge)	146	2,455	2,601	124	3,367	3,491	137	1,328	1,465
Trinity River basin (above Willow Creek)	923	9,433	10,356	2,735	9,341	12,076	209	3,054	3,263
Balance of Klamath system	4,367	8,281	12,648	2,552	9,495	12,047	1,921	4,393	6,314
Subtotals	5,436	20,169	25,605	5,411	22,203	27,614	2,267	8,775	11,042
<u>Indian Net Harvest e/</u>									
Klamath River (below Hwy 101 bridge)	36	39,978	40,014	138	36,914	37,052	0	37,130	37,130
Klamath River (Hwy 101 to Trinity mouth)	117	8,136	8,253	173	9,667	9,840	120	4,961	5,081
Trinity River (Hoopa Reservation)	262	4,982	5,244	267	5,070	5,337	71	3,474	3,545
Subtotals	415	53,096	53,511	578	51,651	52,229	191	45,565	45,756
Total In-river Harvest	5,851	73,265	79,116	5,989	73,854	79,843	2,458	54,340	56,798

IN-RIVER RUN

	1987			1988			1989		
<u>Totals</u>	Grilse	Adults	Totals	Grilse	Adults	Totals	Grilse	Adults	Totals
In-river Harvest and Escapement	18,901	204,105	223,006	23,894	186,698	210,592	9,037	120,199	129,236
Angling Mortality (2.04% of harvest) f/	111	412	523	110	453	564	46	179	225
Net Mortality (8.70% of harvest) f/	36	4,617	4,653	50	4,491	4,542	17	3,962	3,979
Total In-river Run	19,048	209,134	228,182	24,054	191,642	215,696	9,100	124,340	133,440

(continued next page)

**Klamath River Basin Fall Chinook Salmon Spawner Escapement, In-river Harvest and Run-size Estimates
1978-2011 a/**

Page 5 of 15

SPAWNER ESCAPEMENT

	1990			1991			1992		
<u>Hatchery Spawners</u>	Grilse	Adults	Totals	Grilse	Adults	Totals	Grilse	Adults	Totals
Iron Gate Hatchery (IGH)	321	6,719	7,040	65	4,002	4,067	3,737	3,581	7,318
Trinity River Hatchery (TRH)	371	1,348	1,719	205	2,482	2,687	211	3,779	3,990
Subtotals	692	8,067	8,759	270	6,484	6,754	3,948	7,360	11,308
<u>Natural Spawners</u>									
Trinity River basin									
(above Willow Creek, excluding TRH)	241	7,682	7,923	382	4,867	5,249	2,563	7,139	9,702
Salmon River basin	596 ^u	4,071 ^u	4,667 ^u	143	1,337	1,480	547	778	1,325
Scott River basin	236	1,379	1,615	146	2,019	2,165	965	1,873	2,838
Shasta River basin	118	415	533	10	716	726	66	520	586
Bogus Creek basin	53	732	785	20	1,261	1,281	556	598	1,154
Main Stem Klamath River									
(excluding IGH)	59	505	564	8	572	580	234	366	600
Misc. Klamath tributaries									
(above Hoopa and Yurok Reservations)	30	694	724	9	495	504	153	280	433
Hoopa and Yurok Reservation tribs.	17 ^k	118 ^k	135 ^k	0 ^k	382 ^k	382 ^k	59 ^k	474 ^k	533 ^k
Subtotals	1,350	15,596	16,946	718	11,649	12,367	5,143	12,028	17,171
Total Spawner Escapement	2,042	23,663	25,705	988	18,133	19,121	9,091	19,388	28,479

IN-RIVER HARVEST

	1990			1991			1992		
<u>Angler Harvest</u>	Grilse	Adults	Totals	Grilse	Adults	Totals	Grilse	Adults	Totals
Klamath River (below Hwy 101 bridge)	58	291	349	19	314	333	13	20	33
Trinity River basin (above Willow Creek)	22	328	350	94	1,177	1,271	158	314	472
Balance of Klamath system	2,020	2,934	4,954	573	1,892	2,465	3,949	668	4,617
Subtotals	2,100	3,553	5,653	686	3,383	4,069	4,120	1,002	5,122
<u>Indian Net Harvest e/</u>									
Klamath River (below Hwy 101 bridge)	13	3,648	3,661	7	3,902	3,909	124	1,152	1,276
Klamath River (Hwy 101 to Trinity mouth)	141	3,447	3,588	25	5,016	5,041	200	3,687	3,887
Trinity River (Hoopa Reservation)	36	811	847	30	1,280	1,310	42	946	988
Subtotals	190	7,906	8,096	62	10,198	10,260	366	5,785	6,151
Total In-river Harvest	2,290	11,459	13,749	748	13,581	14,329	4,486	6,787	11,273

IN-RIVER RUN

	1990			1991			1992		
<u>Totals</u>	Grilse	Adults	Totals	Grilse	Adults	Totals	Grilse	Adults	Totals
In-river Harvest and Escapement	4,332	35,122	39,454	1,736	31,714	33,450	13,577	26,175	39,752
Angling Mortality (2.04% of harvest) f/	43	73	115	14	69	83	84	20	105
Net Mortality (8.70% of harvest) f/	17	687	704	5	887	892	32	503	535
Total In-river Run	4,392	35,882	40,274	1,755	32,670	34,425	13,693	26,698	40,391

(continued next page)

**Klamath River Basin Fall Chinook Salmon Spawner Escapement, In-river Harvest and Run-size Estimates
1978-2011 a/**

Page 6 of 15

SPAWNER ESCAPEMENT

	1993			1994			1995		
<u>Hatchery Spawners</u>	Grilse	Adults	Totals	Grilse	Adults	Totals	Grilse	Adults	Totals
Iron Gate Hatchery (IGH)	883	20,828	21,711	758	13,808 m/	14,566	259	22,681 m/	22,940
Trinity River Hatchery (TRH)	736	815	1,551	4,442	3,264	7,706	76	15,178	15,254
Subtotals	1,619	21,643	23,262	5,200	17,072	22,272	335	37,859	38,194
<u>Natural Spawners</u>									
Trinity River basin									
(above Willow Creek, excluding TRH)	2,465	5,905	8,370	2,505	10,906	13,411	9,262	77,876	87,138
Salmon River basin	456	3,077	3,533	277	3,216	3,493	1,335	4,140	5,475
Scott River basin	265	5,035	5,300	505	2,358	2,863	3,279	11,198	14,477
Shasta River basin	85	1,341	1,426	1,840	3,363	5,203	695	12,816	13,511
Bogus Creek basin	431	3,285	3,716	443	7,817	8,260	1,207	45,225	46,432
Main Stem Klamath River									
(excluding IGH)	31 n/	647 n/	678 n/	625 n/	3,249 n/	3,874 n/	768 n/	6,472 n/	7,240 n/
Misc. Klamath tributaries									
(above Hoopa and Yurok Reservations)	92	2,470	2,562	50	1,202	1,252	744 o/	3,654 o/	4,398 o/
Hoopa and Yurok Reservation tribs.	0 h/	98 h/	98 h/	0 h/	222 h/	222 h/	34 p/	413 p/	447 p/
Subtotals	3,825	21,858	25,683	6,245	32,333	38,578	17,324	161,794	179,118
Total Spawner Escapement	5,444	43,501	48,945	11,445	49,405	60,850	17,659	199,653	217,312

IN-RIVER HARVEST

	1993			1994			1995		
<u>Angler Harvest</u>	Grilse	Adults	Totals	Grilse	Adults	Totals	Grilse	Adults	Totals
Klamath River (below Hwy 101 bridge)	23	669	692	246	662	908	323	956	1,279
Trinity River basin (above Willow Creek)	172	391	563	547	260	807	554	2,779	3,333
Balance of Klamath system	1,730	2,112	3,842	1,763	910	2,673	3,543	2,346 q/	5,889
Subtotals	1,925	3,172	5,097	2,556	1,832	4,388	4,420	6,081	10,501
<u>Indian Net Harvest e/</u>									
Klamath River (below Hwy 101 bridge)	62	3,017	3,079	81	4,362	4,443	137	5,119	5,256
Klamath River (Hwy 101 to Trinity mouth)	80	5,127	5,207	118	5,064	5,182	152	7,055	7,207
Trinity River (Hoopa Reservation)	33	1,492	1,525	94	2,266	2,360	268	3,383	3,651
Subtotals	175	9,636	9,811	293	11,692	11,985	557	15,557	16,114
Total In-river Harvest	2,100	12,808	14,908	2,849	13,524	16,373	4,977	21,638	26,615

IN-RIVER RUN

	1993			1994			1995		
<u>Totals</u>	Grilse	Adults	Totals	Grilse	Adults	Totals	Grilse	Adults	Totals
In-river Harvest and Escapement	7,544	56,309	63,853	14,294	62,929	77,223	22,636	221,291	243,927
Angling Mortality (2.04% of harvest) f/	39	65	104	52	37	90	90	124	214
Net Mortality (8.70% of harvest) f/	15	838	853	25	1,017	1,042	48	1,353	1,401
Total In-river Run	7,598	57,212	64,810	14,371	63,983	78,354	22,774	222,768	245,542

(continued next page)

**Klamath River Basin Fall Chinook Salmon Spawner Escapement, In-river Harvest and Run-size Estimates
1978-2011 a/**

Page 7 of 15

SPAWNER ESCAPEMENT

Hatchery Spawners

Iron Gate Hatchery (IGH)
Trinity River Hatchery (TRH)
Subtotals

1996			1997			1998		
Grilse	Adults	Totals	Grilse	Adults	Totals	Grilse	Adults	Totals
543	13,622	14,165	452	13,275	13,727	403	14,923	15,326
249	6,411	6,660	820	5,387	6,207	192	14,296	14,488
792	20,033	20,825	1,272	18,662	19,934	595	29,219	29,814

Natural Spawners

Trinity River basin
(above Willow Creek, excluding TRH)
Salmon River basin
Scott River basin
Shasta River basin
Bogus Creek basin
Main Stem Klamath River
(excluding IGH)
Misc. Klamath-Trinity tributaries
(above Hoopa and Yurok Reservations)
Hoopa and Yurok Reservation tribs.
Subtotals

4,478	42,646	47,124	2,845	11,507	14,352	1,974	24,460	26,434
274	5,189	5,463	217	5,783	6,000	116	1,337	1,453
145	11,952	12,097	277	8,284	8,561	266	3,061	3,327
46	1,404	1,450	334	1,667	2,001	76	2,466	2,542
377	10,420	10,797	221	9,809	10,030	205	6,630	6,835
218 n/	2,790 n/	3,008 n/	104 n/	3,472 n/	3,576 n/	109 n/	2,913 n/	3,022 n/
581 o/	5,804 o/	6,385 o/	174 o/	5,174 o/	5,348 o/	83 o/	1,232 o/	1,315 o/
55 p/	1,121 p/	1,176 p/	53 p/	448 p/	501 p/	26 p/	389 p/	415 p/
6,174	81,326	87,500	4,225	46,144	50,369	2,855	42,488	45,343

Total Spawner Escapement

6,966	101,359	108,325	5,497	64,806	70,303	3,450	71,707	75,157
-------	---------	---------	-------	--------	--------	-------	--------	--------

IN-RIVER HARVEST

Angler Harvest

Klamath River (below Hwy 101 bridge)
Klamath River (Hwy 101 to Coon Cr Falls)
Trinity River basin (above Willow Creek)
Balance of Klamath system
Subtotals

1996			1997			1998		
Grilse	Adults	Totals	Grilse	Adults	Totals	Grilse	Adults	Totals
100	3,110	3,210	49	2,182	2,231	124	1,603	1,727
1,128	4,052	5,180	1,226	512	1,738	406	1,270	1,676
331	1,214	1,545 r/	353	1,331	1,684 s/	275	3,262	3,537 u/
753	4,390	5,143	781	1,651	2,432 t/	303	1,575	1,878 v/
2,312	12,766	15,078	2,409	5,676	8,085	1,108	7,710 x/	8,818

Indian Net Harvest e/

Klamath River (below Hwy 101 bridge)
Klamath River (Hwy 101 to Trinity mouth)
Trinity River (Hoopa Reservation)
Subtotals

163	49,113	49,276	21	5,574	5,595	16	3,454	3,470
19	4,593	4,612	8	5,275	5,283	32	5,198	5,230
8	2,770	2,778	6	1,238	1,244	5	1,535	1,540
190	56,476	56,666	35	12,087	12,122	53	10,187	10,240

Total In-river Harvest

2,502	69,242	71,744	2,444	17,763	20,207	1,161	17,897	19,058
-------	--------	--------	-------	--------	--------	-------	--------	--------

IN-RIVER RUN

Totals

In-river Harvest and Escapement
Angling Mortality (2.04% of harvest) f/
Net Mortality (8.70% of harvest) f/

1996			1997			1998		
Grilse	Adults	Totals	Grilse	Adults	Totals	Grilse	Adults	Totals
9,468	170,601	180,069	7,941	82,569	90,510	4,611	89,604	94,215
47	261	308	49	116	165	23	157	180
17	4,911	4,927	3	1,051	1,054	5	886	890

Total In-river Run

9,532	175,773	185,305	7,993	83,736	91,729	4,639	90,647	95,286
-------	---------	---------	-------	--------	--------	-------	--------	--------

(continued next page)

**Klamath River Basin Fall Chinook Salmon Spawner Escapement, In-river Harvest and Run-size Estimates
1978-2011 a/**

Page 8 of 15

SPAWNER ESCAPEMENT

	1999			2000			2001		
<u>Hatchery Spawners</u>	Grilse	Adults	Totals	Grilse	Adults	Totals	Grilse	Adults	Totals
Iron Gate Hatchery (IGH)	4,830	9,290	14,120	839	71,635	72,474	1,364	37,204	38,568
Trinity River Hatchery (TRH)	2,027	5,037	7,064	1,070	25,976	27,046	267	17,908	18,175
Hatchery Spawner Subtotals:	6,857	14,327	21,184	1,909	97,611	99,520	1,631	55,112	56,743
<u>Natural Spawners</u>									
Main Stem Klamath River n/									
(excluding IGH)	630	1,978	2,608	184	3,271	3,455	1,016	9,832	10,848
Salmon River basin	110	670	780	228	1,544	1,772	743	2,607	3,350
Scott River basin	563	3,021	3,584	524	5,729	6,253	744	5,398	6,142
Shasta River basin	1,901	1,296	3,197	1,271	11,025	12,296	2,641	8,452	11,093
Bogus Creek basin	2,628	3,537	6,165	373	34,678	35,051	648	11,927	12,575
Misc. Klamath tributaries o/									
(above Yurok Reservation)	251	777	1,028	158	1,345	1,503	538	2,240	2,778
Yurok Reservation tribs. (Klamath River) p/	210	381	591	153	796	949	48	488	536
Klamath Natural Spawner Subtotals:	6,293	11,660	17,953	2,891	58,388	61,279	6,378	40,944	47,322
Main Stem Trinity River dd/									
(excluding TRH)	4,154	6,753	10,907	3,376	23,468	26,844	1,336	35,991	37,327 cc/
Misc. Trinity tributaries o/									0
(above Hoopa Reservation)				103	706	809	27	729	756
Hoopa Reservation tribs. (Trinity River) p/	0	44	44	24	166	190	6	170	176
Trinity Natural Spawner Subtotals:	4,154	6,797	10,951	3,503	24,340	27,843	1,369	36,890	38,259
Natural Spawner Subtotals:	10,447	18,457	28,904	6,394	82,728	89,122	7,747	77,834	85,581
Total Spawner Escapement	17,304	32,784	50,088	8,303	180,339	188,642	9,378	132,946	142,324

IN-RIVER HARVEST

	1999			2000			2001		
<u>Angler Harvest</u>	Grilse	Adults	Totals	Grilse	Adults	Totals	Grilse	Adults	Totals
Klamath River (below Hwy 101 bridge)	37	177	214	108	1,190	1,298	298	4,620	4,918
Klamath River (Hwy 101 to Coon Cr Falls)	869 y/	1,112 y/	1,981 y/	972	1,006	1,978	825	1,960	2,785
Klamath River (Coon Cr Falls to IGH)	138 z/	571 z/	709 z/	117	1,549	1,666 bb/	242	3,041	3,283
Trinity River basin above Weitchpec aa/	572	422	994	385	1,905	2,290	135	2,513	2,648
Angler Harvest Subtotals:	1616	2282	3898	1582	5650	7232	1,500	12,134	13,634
<u>Indian Net Harvest e/</u>									
Klamath River (below Hwy 101 bridge)	126	4,387	4,513	35	17,278	17,313	261	28,967	29,228
Klamath River (Hwy 101 to Trinity mouth)	49	7,295	7,344	140	6,175	6,315	78	4,724	4,802
Trinity River (Hoopa Reservation)	96	2,978	3,074	128	5,962	6,090	60	4,954	5,014
Indian Net Harvest Subtotals:	271	14,660	14,931	303	29,415	29,718	399	38,645	39,044
Total In-river Harvest	1,887	16,942	18,829	1,885	35,065	36,950	1,899	50,779	52,678

IN-RIVER RUN

	1999			2000			2001		
<u>Totals</u>	Grilse	Adults	Totals	Grilse	Adults	Totals	Grilse	Adults	Totals
In-river Harvest and Escapement	19,191	49,726	68,917	10,188	215,404	225,592	11,277	183,725	195,002
Angling Mortality (2.04% of harvest) f/	33	47	80	32	115	148	31	248	278
Net Mortality (8.70% of harvest) f/	24	1,275	1,298	26	2,558	2,584	35	3,360	3,395
Total In-river Run	19,248	51,048	70,296	10,246	218,077	228,323	11,343	187,333	198,676

(continued next page)

**Klamath River Basin Fall Chinook Salmon Spawner Escapement, In-river Harvest and Run-size Estimates
1978-2011 a/**

Page 9 of 15

SPAWNER ESCAPEMENT

	2002			2003			2004		
Hatchery Spawners	Grilse	Adults	Totals	Grilse	Adults	Totals	Grilse	Adults	Totals
Iron Gate Hatchery (IGH)	1,294	23,667	24,961	290	31,970	32,260	937	10,582	11,519
Trinity River Hatchery (TRH)	1,037	3,516	4,553	574	29,812	30,386	1,044	12,399	13,443
Hatchery Spawner Subtotals:	2,331	27,183	29,514	864	61,782	62,646	1,981	22,981	24,962
Natural Spawners									
Main Stem Klamath River n/ (excluding IGH)	658	21,650	22,308	298	17,722	18,020	205	5,037	5,242
Salmon River basin	78	2,669	2,747	73	3,302	3,375	51	282	333
Scott River basin	47	4,261	4,308	65	11,988	12,053	22	445	467
Shasta River basin	386	6,432	6,818	155	4,134	4,289	129	833	962
Bogus Creek basin	304	17,530	17,834	188	15,422	15,610	295	3,493	3,788
Misc. Klamath tributaries o/ (above Yurok Reservation)	44	1,344	1,388	38	1,761	1,799	80	477	557
Yurok Reservation tribs. (Klamath River) p/	12	339	351	31	1,094	1,125	64	144	208
Klamath Natural Spawner Subtotals:	1,529	54,225	55,754	848	55,423	56,271	846	10,711	11,557
Main Stem Trinity River dd/ (excluding TRH)	2,230	10,880	13,110	1,065	31,173	32,238	3,722	12,718	16,440
Misc. Trinity tributaries o/ (above Hoopa Reservation)	66	324	390	109	602	711	75	258	333
Hoopa Reservation tribs. (Trinity River) p/	42	206	248	80	444	524	42	144	186
Trinity Natural Spawner Subtotals:	2,338	11,410	13,748	1,254	32,219	33,473	3,839	13,120	16,959
Natural Spawner Subtotals:	3,867	65,635	69,502	2,102	87,642	89,744	4,685	23,831	28,516
Total Spawner Escapement	6,198	92,818	99,016	2,966	149,424	152,390	6,666	46,812	53,478

IN-RIVER HARVEST

	2002			2003			2004		
Angler Harvest	Grilse	Adults	Totals	Grilse	Adults	Totals	Grilse	Adults	Totals
Klamath River (below Hwy 101 bridge)	274	3,285	3,559	180	1,589	1,769	748	725	1,473
Klamath River (Hwy 101 to Coon Cr Falls)	284	3,268	3,552	369	3,336	3,705	1,493	1,472	2,965
Klamath River (Coon Cr Falls to IGH)	93	3,216	3,309	40	2,397	2,437	52	1,266	1,318
Trinity River basin above Weitchpec aa/	219	726	945	225	2,358	2,583	448	540	988
Angler Harvest Subtotals:	870	10,495	11,365	814	9,680	10,494	2,741	4,003	6,744
Indian Net Harvest e/									
Klamath River (below Hwy 101 bridge)	17	20,149	20,166	15	22,688	22,703	75	21,037	21,112
Klamath River (Hwy 101 to Trinity mouth)	41	3,257	3,298	17	4,575	4,592	73	3,077	3,150
Trinity River (Hoopa Reservation)	68	1,168	1,236	12	2,771	2,783	20	1,689	1,709
Indian Net Harvest Subtotals:	126	24,574	24,700	44	30,034	30,078	168	25,803	25,971
Total In-river Harvest	996	35,069	36,065	858	39,714	40,572	2,909	29,806	32,715

IN-RIVER RUN

	2002			2003			2004		
Totals	Grilse	Adults	Totals	Grilse	Adults	Totals	Grilse	Adults	Totals
In-river Harvest and Escapement	7,194	127,887	135,081	3,824	189,138	192,962	9,575	76,618	86,193
Angling Mortality (2.04% of harvest) f/	18	214	232	17	198	214	56	82	138
Net Mortality (8.70% of harvest) f/	11	2,137	2,148	4	2,612	2,615	15	2,243	2,258
Fish Die Off ee/	2,003	30,550	32,553						
Total In-river Run	9,226	160,788	170,014	3,845	191,948	195,791	9,646	78,943	88,589

(continued next page)

**Klamath River Basin Fall Chinook Salmon Spawner Escapement, In-river Harvest and Run-size Estimates
1978-2011 a/**

Page 10 of 15

SPAWNER ESCAPEMENT

	2005			2006			2007		
Hatchery Spawners	Grilse	Adults	Totals	Grilse	Adults	Totals	Grilse	Adults	Totals
Iron Gate Hatchery (IGH)	42	13,955	13,997	2,386	11,604	13,990	180	16,969	17,149
Trinity River Hatchery (TRH)	59	13,744	13,803	4,076	7,918	11,994	33	18,081	18,114
Hatchery Spawner Subtotals:	101	27,699	27,800	6,462	19,522	25,984	213	35,050	35,263
Natural Spawners									
Main Stem Klamath River n/ (excluding IGH)	32	4,622	4,654	853	4,538	5,391	41	6,914	6,955
Salmon River basin	105	401	506	791	1,278	2,069	55	1,377	1,432
Scott River basin	58	698	756	1,953	3,007	4,960	11	4,494	4,505
Shasta River basin	37	2,018	2,055	1,395	789	2,184	27	2,009	2,036
Bogus Creek basin	58	5,341	5,399	765	3,368	4,133	64	4,677	4,741
Misc. Klamath tributaries o/ (above Yurok Reservation)	40	361	401	739	1,165	1,904	26	1,414	1,440
Yurok Reservation tribs. (Klamath River) p/	68	113	181	20	119	139	8	407	415
Klamath Natural Spawner Subtotals:	398	13,554	13,952	6,516	14,264	20,780	232	21,292	21,524
Main Stem Trinity River dd/ (excluding TRH)	760	12,885	13,645	7,607	15,375	22,982	832	39,038	39,870
Misc. Trinity tributaries o/ (above Hoopa Reservation)	8	164	172	71	142	213	5	246	251
Hoopa Reservation tribs. (Trinity River) p/	4	84	88	189	382	571	2	94	96
Trinity Natural Spawner Subtotals:	772	13,133	13,905	7,867	15,899	23,766	839	39,378	40,217
Natural Spawner Subtotals:	1,170	26,687	27,857	14,383	30,163	44,546	1,071	60,670	61,741
Total Spawner Escapement	1,271	54,386	55,657	20,845	49,685	70,530	1,284	95,720	97,004

IN-RIVER HARVEST

	2005			2006			2007		
Angler Harvest	Grilse	Adults	Totals	Grilse	Adults	Totals	Grilse	Adults	Totals
Klamath River (below Hwy 101 bridge)	311	243	554	60	1	61	20	1,097	1,117
Klamath River (Hwy 101 to Weitchpec)	595	468	1,063	4,421	38	4,459	218	2,211	2,429
Klamath River (Weitchpec to IGH)	6	318	324	721	18	739	19	1,667	1,686
Trinity River basin above Weitchpec aa/	118	956	1,074	325	5	330	112	1,337	1,449
Angler Harvest Subtotals:	1,030	1,985	3,015	5,527	62 ff/	5,589	369	6,312	6,681
Indian Net Harvest e/									
Klamath River (below Hwy 101 bridge)	21	2,293	2,314	30	2,726	2,756	16	23,475	23,491
Klamath River (Hwy 101 to Trinity mouth)	38	3,314	3,352	240	3,396	3,636	5	1,800	1,805
Trinity River (Hoopa Reservation)	11	2,409	2,420	145	4,161	4,306	0	2,298	2,298
Indian Net Harvest Subtotals:	70	8,016	8,086	415	10,283	10,698	21	27,573	27,594
Total In-river Harvest	1,100	10,001	11,101	5,942	10,345	16,287	390	33,885	34,275

IN-RIVER RUN

	2005			2006			2007		
Totals	Grilse	Adults	Totals	Grilse	Adults	Totals	Grilse	Adults	Totals
In-river Harvest and Escapement	2,371	64,387	66,758	26,787	60,030	86,817	1,674	129,605	131,279
Angling Mortality (2.04% of harvest) f/	21	41	62	113	76	114	8	129	137
Net Mortality (8.70% of harvest) f/	6	697	703	36	894	930	2	2,397	2,399
Catch and Release Mortality gg/				0	373	373			
Total In-river Run	2,398	65,125	67,523	26,936	61,373	88,309	1,684	132,131	133,815

(continued next page)

**Klamath River Basin Fall Chinook Salmon Spawner Escapement, In-river Harvest and Run-size Estimates
1978-2011 a/**

Page 11 of 15

SPAWNER ESCAPEMENT

	2008			2009			2010		
Hatchery Spawners	Grilse	Adults	Totals	Grilse	Adults	Totals	Grilse	Adults	Totals
Iron Gate Hatchery (IGH)	2,130	9,101	11,231	1,229	12,263	13,492	1,069	10,278	11,347
Trinity River Hatchery (TRH)	801	4,451	5,252	143	7,351	7,494	1,432	7,774	9,206
Hatchery Spawner Subtotals:	2,931	13,552	16,483	1,372	19,614	20,986	2,501	18,052	20,553
Natural Spawners									
Main Stem Klamath River n/ (excluding IGH)	1,199	5,830	7,029	295	7,945	8,240	275	3,684	3,959
Salmon River basin	650	1,749	2,399	516	2,204 hh/	2,720	356	2,478 hh/	2,834
Scott River basin	1,228	3,445	4,673	44	2,167	2,211	394	2,114	2,508
Shasta River basin	3,621	2,741	6,362	151	6,145	6,296	87	1,261	1,348
Bogus Creek basin	1,565	3,001	4,566	471	5,455	5,926	291	3,180	3,471
Misc. Klamath tributaries o/ (above Yurok Reservation)	1,073	1,845	2,918	175	3,094	3,269	274	1,663	1,937
Yurok Reservation tribs. (Klamath River) p/	89	409	498	296	733	1,029	134	790	924
Klamath Natural Spawner Subtotals:	9,425	19,020	28,445	1,948	27,743	29,691	1,811	15,170	16,981
Main Stem Trinity River dd/ (excluding TRH)	7,255	11,006	18,261	5,958	16,168	22,126	9,779	21,579	31,358
Misc. Trinity tributaries o/ (above Hoopa Reservation)	158	240	398	70	190	260	69	152	221
Hoopa Reservation tribs. (Trinity River) p/	385	584	969	114	308	422	147	324	471
Trinity Natural Spawner Subtotals:	7,798	11,830	19,628	6,142	16,666	22,808	9,995	22,055	32,050
Natural Spawner Subtotals:	17,223	30,850	48,073	8,090	44,409	52,499	11,806	37,225	49,031
Total Spawner Escapement	20,154	44,402	64,556	9,462	64,023	73,485	14,307	55,277	69,584

IN-RIVER HARVEST

	2008			2009			2010		
Angler Harvest	Grilse	Adults	Totals	Grilse	Adults	Totals	Grilse	Adults	Totals
Klamath River (below Hwy 101 bridge)	521	141	662	319	1,191	1,510	162	510	672
Klamath River (Hwy 101 to Weitchpec)	3,358	896	4,254	1,559	2,015	3,574	1,320	1,225	2,545
Klamath River (Weitchpec to IGH)	160	523	683	155	1,614	1,769	88	875	963
Trinity River basin	269	359	628	181	831	1,012	261	425	686
Angler Harvest Subtotals:	4,308	1,919	6,227	2,214	5,651	7,865	1,831	3,035	4,866
Indian Net Harvest e/									
Klamath River (below Hwy 101 bridge)	302	17,710	18,012	43	19,465	19,508	20	21,725	21,745
Klamath River (Hwy 101 to Trinity mouth)	187	2,636	2,823	39	4,769	4,808	156	4,461	4,617
Trinity River (Hoopa Reservation)	152	1,913	2,065	96	4,153	4,249	252	3,701	3,953
Indian Net Harvest Subtotals:	641	22,259	22,900	178	28,387	28,565	428	29,887	30,315
Total In-river Harvest	4,949	24,178	29,127	2,392	34,038	36,430	2,259	32,922	35,181

IN-RIVER RUN

	2008			2009			2010		
Totals	Grilse	Adults	Totals	Grilse	Adults	Totals	Grilse	Adults	Totals
In-river Harvest and Escapement	25,103	68,580	93,683	11,854	98,061	109,915	16,566	88,199	104,765
Angling Mortality (2.04% of harvest) f/	88	39	127	45	115	161	37	62	99
Net Mortality (8.70% of harvest) f/	56	1,935	1,991	15	2,468	2,484	37	2,599	2,636
Catch and Release Mortality gg/									
Total In-river Run	25,247	70,554	95,801	11,914	100,644	112,558	16,640	90,860	107,500

(continued next page)

**Klamath River Basin Fall Chinook Salmon Spawner Escapement, In-river Harvest and Run-size Estimates,
1978-2011 a/**

Page 12 of 15

SPAWNER ESCAPEMENT

	2011			2012			2013		
<u>Hatchery Spawners</u>	Grilse	Adults	Totals	Grilse	Adults	Totals	Grilse	Adults	Totals
Iron Gate Hatchery (IGH)	9,549	8,490	18,039						
Trinity River Hatchery (TRH)	1,875	13,846	15,721						
Hatchery Spawner Subtotals:	11,424	22,336	33,760	0	0	0	0	0	0

Natural Spawners

Main Stem Klamath River n/ (excluding IGH)	3,306	3,976	7,282						
Salmon River basin	1,819	3,674	5,493						
Scott River basin	2,499	3,016	5,515						
Shasta River basin	11,187	213	11,400						
Bogus Creek basin	2,303	2,919	5,222						
Misc. Klamath tributaries o/ (above Yurok Reservation)	3,259	3,072	6,331						
Yurok Reservation tribs. (Klamath River) p	418	1,143	1,561						
Klamath Natural Spawner Subtotals:	24,791	18,013	42,804	0	0	0	0	0	0

Main Stem Trinity River dd/ (excluding TRH)	37,818	28,670	66,488						
Misc. Trinity tributaries o/ (above Hoopa Reservation)	96	542	638						
Hoopa Reservation tribs. (Trinity River) p/	94	530	624						
Trinity Natural Spawner Subtotals:	38,008	29,742	67,750	0	0	0	0	0	0

Natural Spawner Subtotals:	62,799	47,755	110,554	0	0	0	0	0	0
-----------------------------------	---------------	---------------	----------------	----------	----------	----------	----------	----------	----------

Total Spawner Escapement	74,223	70,091	144,314	0	0	0	0	0	0
---------------------------------	---------------	---------------	----------------	----------	----------	----------	----------	----------	----------

IN-RIVER HARVEST

	2011			2012			2013		
<u>Angler Harvest</u>	Grilse	Adults	Totals	Grilse	Adults	Totals	Grilse	Adults	Totals
Klamath River (below Hwy 101 bridge)	700	624	1,324						
Klamath River (Hwy 101 to Weitchpec)	6,557	912	7,469						
Klamath River (Weitchpec to IGH)	1,480	1,483	2,963						
Trinity River basin	1,259	1,145	2,404						
Angler Harvest Subtotals:	9,996	4,164	14,160	0	0	0	0	0	0

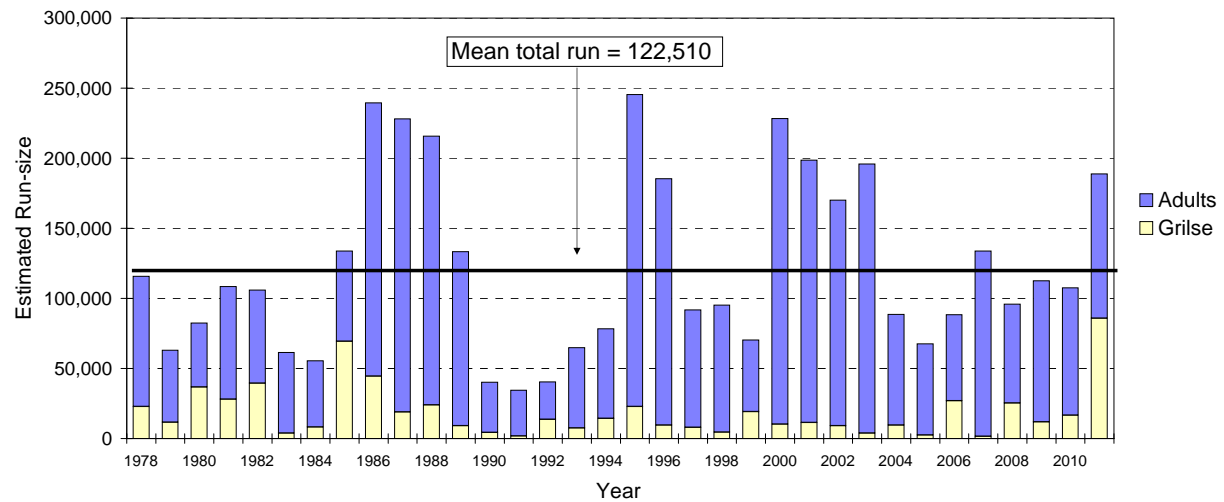
<u>Indian Net Harvest e/</u>									
Klamath River (below Hwy 101 bridge)	429	17,218	17,647						
Klamath River (Hwy 101 to Trinity mouth)	467	4,272	4,739						
Trinity River (Hoopa Reservation)	408	4,881	5,289						
Indian Net Harvest Subtotals:	1,304	26,371	27,675	0	0	0	0	0	0

Total In-river Harvest	11,300	30,535	41,835	0	0	0	0	0	0
-------------------------------	---------------	---------------	---------------	----------	----------	----------	----------	----------	----------

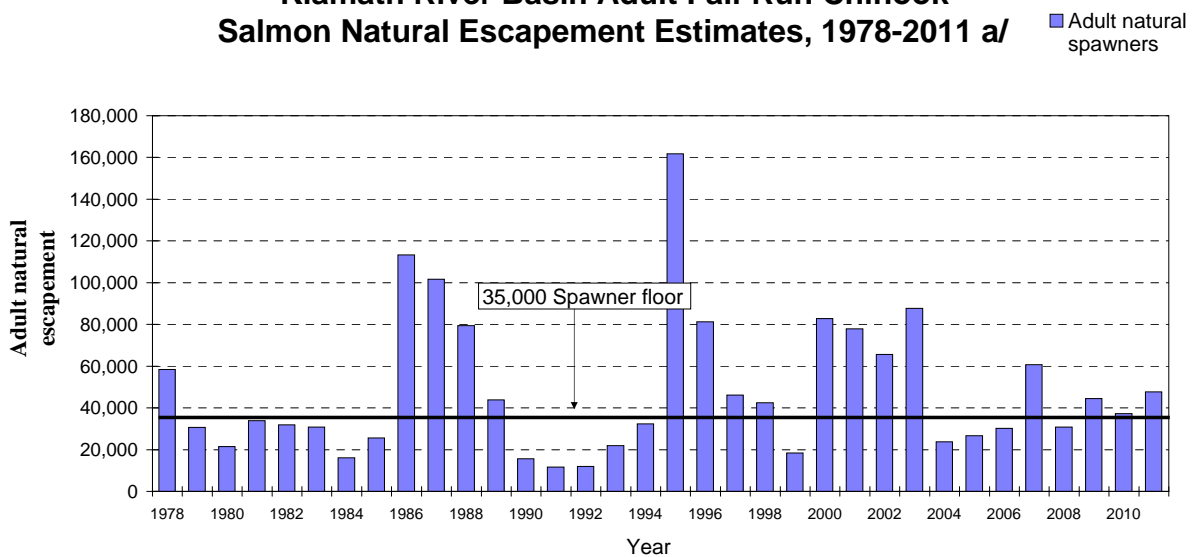
IN-RIVER RUN

	2011			2012			2013		
<u>Totals</u>	Grilse	Adults	Totals	Grilse	Adults	Totals	Grilse	Adults	Totals
In-river Harvest and Escapement	85,523	100,626	186,149	0	0	0	0	0	0
Angling Mortality (2.04% of harvest) f/	204	85	289	0	0	0	0	0	0
Net Mortality (8.70% of harvest) f/	113	2,294	2,407	0	0	0	0	0	0
Catch and Release Mortality gg/									
Total In-river Run	85,840	103,005	188,845	0	0	0	0	0	0

Klamath River Basin Fall-Run Chinook Salmon Run-size Estimates, 1978-2011 a/



Klamath River Basin Adult Fall-Run Chinook Salmon Natural Escapement Estimates, 1978-2011 a/



a/ 2011 data preliminary

**Footnotes for Klamath River Basin Fall Chinook Salmon Spawner Escapement,
In-river Harvest and Run-size Estimates, 1978-2011^a**

Page 14 of 15

- a/ Prepared February 8, 2012. All figures are California Department of Fish and Game (CDFG) counts/estimates unless otherwise indicated. All figures for Iron Gate and Trinity River hatcheries represent counts of fish entering those facilities. All spawner escapement figures for the Shasta River basin for 1978-1987 and 1989-2011, plus those for Bogus Creek basin for 1980-1991 and 2003-2011 are based on counts made at counting/video stations located near the mouths of those streams. All remaining spawner escapements and all harvest figures are estimates developed from data obtained through ongoing field investigations in the Klamath-Trinity system. Figures for years through 2010 are final; 2011 figures are preliminary, subject to revision.
- b/ Figure not available.
- c/ USFWS estimate.
- d/ In 1978, the Klamath River system sport salmon fishing season was closed August 25. There was essentially no sport harvest of fall Chinook in the Trinity River basin in 1978.
- e/ USFWS estimates for years through 1982; 1983 through 1993 estimates jointly made by USFWS and Hoopa Valley Business Council Fisheries Department (HVBCFD); 1994 through 2011 estimates made by HVBCFD for the Hoopa Reservation and Yurok Tribal Fisheries Department for the Yurok Reservation.
- f/ Factors for non-landed catch mortality calculated by the Klamath River Technical Advisory Team (KRTAT, 1986, "Recommended Spawning Escapement Policy for Klamath River Fall-run Chinook"). Modified non-landed catch mortality rates of 2.04% and 8.70% were applied to sport and net harvest respectively following the 2003 season. These rates were applied retrospectively to all years, replacing the historical rates of 2.0% (sport harvest) and 8.0% (net harvest).
- g/ U.S. Forest Service estimate.
- h/ HVBCFD estimate. Estimate for streams in Hoopa Reservation only.
- i/ In 1985, the Klamath River system sport salmon fishing season was closed to the taking of all salmon below the U.S. Highway 101 bridge from September 9 through December 31; the Klamath from the U.S. Highway 101 bridge to Iron Gate Dam and the Trinity River from its mouth to Lewiston Dam were closed to the taking of salmon 22 inches and longer from September 23 through December 31, 1985.
- j/ Estimates for Hoopa Reservation portion of catch (=947 grilse and 1,941 adults) are of catch occurring during open fishing periods only.
- k/ Estimates jointly made by USFWS and HVBCFD.
- l/ Final figures for Salmon River basin natural spawners shown in the December 11, 1991 table were incorrect. Corrected figures, plus necessary revisions to the 1990 totals, are presented here.
- m/ Figure does not include adults that, following entry into Iron Gate Hatchery, were returned to the river alive and un-spawned, and which are presumed to have spawned naturally. This includes 2,333 fish in 1994 and 8,932 fish in 1995.
- n/ CDFG estimate based on USFWS redd count data through 2000. Estimates for 2001-2011 are USFWS estimates based on a combination of redd count data (Shasta River downstream to Indian Cr.) and carcass mark-recapture estimates upstream of the Shasta River.
- o/ CDFG and USFS, estimates.
- p/ HVBCFD and YTFD estimates. YTFD fish count for Blue Creek is based on several dive surveys conducted at peak of spawning and should not be construed as an escapement estimate. HVBCFD tributary estimates based on redd counts.
- q/ 750 of these adults were harvested between I-5 and IGH after the river reopened to sport angling on 13 OCT. 1995
- r/ Includes 51 grilse and 178 adults harvested in the main stem Trinity River between Willow Creek weir and the mouth of the Trinity River. HVBCFD estimate.
- s/ Includes 251 grilse and 645 adults harvested in the main stem Trinity River between Willow Creek weir and the mouth of the Trinity River. HVBCFD estimate.
- t/ Additional, but unknown harvest occurred upstream of Interstate 5 for jacks between Oct.2-18 and Oct.18-Nov.30th. for all Chinook after Iron Gate Hatchery reached its required 8,000 adult Chinook spawning escapement.
- u/ Includes 298 grilse and 799 adults harvested in the main stem Trinity River between Willow Creek weir and the mouth of the Trinity River. HVBCFD estimate.
- v/ Additional, but unknown harvest occurred upstream of Interstate 5 for jacks between Oct.4-17 after the 28 day window and Oct.17-Nov.30th. for all Chinook after Iron Gate Hatchery reached its required 8,000 adult Chinook spawning escapement.

**Footnotes for Klamath River Basin Fall Chinook Salmon Spawner Escapement,
In-river Harvest and Run-size Estimates, 1978-2011^a**

Page 15 of 15

- x/ Includes fish originally classified as grilse, based on the 24 inch TL specified in the 1998 sport angling regulations, which were re-classified as adult based on preliminary analysis of 1998 data.
- y/ Includes 21 Grilse and 42 adults harvested after the lower river reopened on Oct 15, 1999.
- z/ Harvest estimate based on creel census data and includes 54 grilse and 206 adults harvested during the secondary season allowed above the Interstate 5 bridge after IGH achieved 8,000 adult spawners.
- aa/ Harvest estimate based on HVBCFD creel census below the Willow Creek Weir and CDFG's estimate based on tag returns for the Trinity River above Willow Creek Weir.
- bb/ Harvest estimate based on creel census data and includes 113 grilse and 938 adults harvested during the secondary season allowed above the Interstate 5 bridge after IGH achieved 8,000 adult spawners.
- cc/ Includes 9 jacks and 252 adults estimated to have spawned in the mainstem Trinity River downstream of the Willow Creek Weir. Estimate based on HVBCFD expanded redd count data.
- dd/ Estimates upstream of Willow Creek weir provided by CDFG and are inclusive of the total basin upstream of weir; estimates downstream of Willow Creek weir provided by HVBCFD and only include the main stem Trinity to its confluence with the Klamath River.
- ee/ Prespawn mortality estimate for Chinook salmon that died in the lower Klamath River fish die off, 2002. Estimate provided by USFWS.
- ff/ Estimated 2006 river recreational fishery adult impacts (incidental mortality). Estimation methods documented in 2007 PFMC pre-season report I.
- gg/ The 2006 sport fishery was closed to the take of adult fall Chinook (greater than 22 inches).

- hh/ The 2009 and 2010 Salmon River adult escapement estimates were based on total redd counts (2009) and expanded redd counts from the first two weeks of survey expanded for the season based on historical cumulative average (2010).

List of acronyms

CDFG - California Department of Fish and Game
HVBCFD- Hoopa Valley Business Council Fisheries Department
IGH – Iron Gate Hatchery
KRTAT – Klamath River Technical Advisory Team
PFMC – Pacific Fishery Management Council
TRH – Trinity River Hatchery
USFS – United States Forest Service
USFWS – United States Fish and Wildlife Service
YTFD – Yurok Tribe Fisheries Department